

Manhattan Fire Protection District

Standard Operating Procedure	Section: EMS	Page 1 of 4
	Subject: Multiple Victim Incident	Date 9/13/11 SOP# 1102-1

Purpose:

To establish a policy for actions that shall be taken at a Multiple Victim Incident.

Scope:

This procedure applies to all members of the Manhattan Fire Protection District.

Enforcement:

The primary responsibility for adherence to this procedure rests with company officer. Company officers or acting company officers are responsible for enforcement of this procedure. Authority to deviate from this procedure rests with the company officer or acting company officer. All Silver Cross EMS System Policies and Procedures shall supersede this procedure when applicable. Medical Control orders will also supersede this procedure when in conflict.

Definition:

- **Multiple Victim Incidents (MVI)** - is any medical emergency which overwhelms the usual first response units. This policy is designed to be a management tool to assist the first responding units in mitigating the efficient triage, treatment, and transport of victims involved.
- **START Triage** - stands for **S**imple **T**riage **A**nd **R**apid **T**reatment. It is an easy to use triage plan for first responders to utilize on a Multiple Victim Incident.
- **JumpSTART Triage** - Is a modified START Triage algorithm for pediatric patients.
- **Medical Triage Officer** - is the designated person in command of the triage & treatment process. This should, when possible, be a licensed paramedic. This will usually be the first arriving company officer but may be delegated to the first arriving ambulance paramedic.
- **First Arriving Company Officer** - is the first arriving company officer or acting company officer at the incident.

Triage:

The Manhattan Fire Protection District has adopted the **START Triage** and **JumpSTART Triage** procedures to effectively and rapidly treat and triage patients.

****See attached START Triage and JumpSTART Triage algorithms for clarification.**

Application:

The following will be followed in mitigating the Multiple Victim Incident:

- The first arriving company officer will provide a size up of the scene and establish command per the Manhattan Fire Protection District Incident Command Policy
- The first arriving company officer will also be the Medical Triage Officer and begin an initial triage of patients involved utilizing START Triage procedures. If the first arriving company officer is not a licensed paramedic, they should work in cooperation or designate the first arriving ambulance paramedic the Medical Triage Officer. A total patient count will be obtained including classification; Immediate (Red), Delayed (Yellow), Minor (Green), and Deceased (Black).
- If a specific patient is critical and warrants immediate transport, while the remaining patient's conditions can be sustained by waiting for additional ambulances, the first arriving Ambulance crew may package that patient and perform an expeditious transport if there is another unit on scene to manage the incident.
- If the transport patient total is 3 or more, the Medical Triage Officer or designee will contact Silver Cross Hospital and advise them that we have a Multiple Victim Incident. This call should be to report the total number of patients by classification, the closest hospital from the scene, and to determine the capabilities of the surrounding hospitals.
- The Medical Triage Officer will then assign units a hospital destination based on capabilities obtained from Silver Cross Hospital.
- If the first unit that assumed Medical Triage was an ambulance, it should be the last ambulance to transport a patient if needed. Proper triage and scene management should allow for the most severe patients to be transported first, unless patient access does not allow for this.
- The Medical Triage Officer, Company Officer, and Incident Command shall work closely together to manage patient care and transport appropriately. At times it will be understood that the Medical Triage Officer and Command may be the same individual.

Signature Chief Dan Forsythe Date 9-13-11

START TRIAGE

(Simple Triage and Rapid Treatment)

All Walking Wounded

RESPIRATIONS

MINOR

YES

NO

Position Airway

Over
30/min

Under
30/min

YES

NO

IMMEDIATE

IMMEDIATE

DECEASED

PERFUSION

Radial Pulse Present

Radial Pulse Absent

Capillary Refill

Over
2
Seconds

Under
2
Seconds

Respiration 30
Perfusion 2
Mental Status CAN DO

Control
Bleeding

MENTAL STATUS

IMMEDIATE

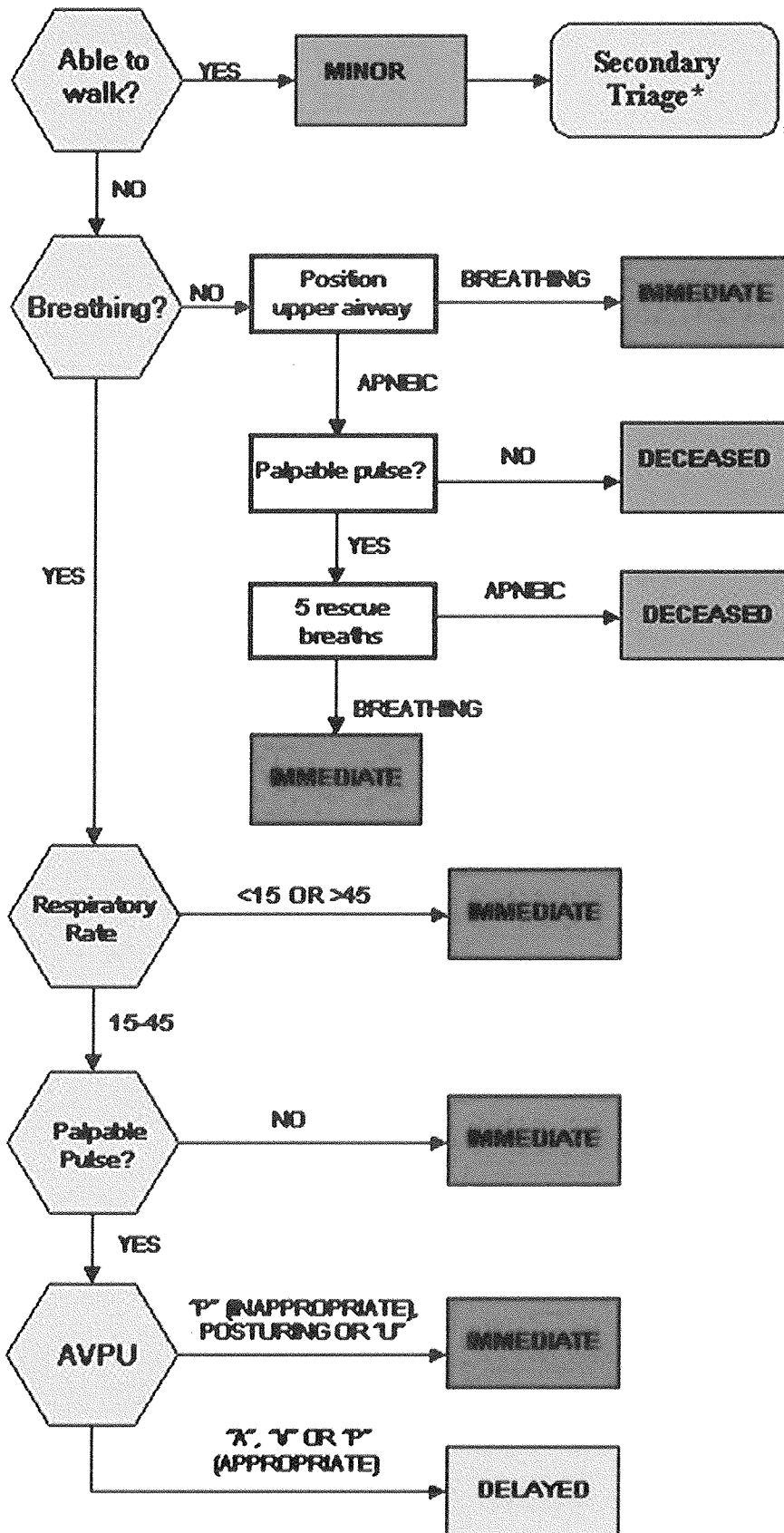
Can't Follow
Simple Commands

Can Follow
Simple Commands

IMMEDIATE

DELAYED

JumpSTART Pediatric MCI Triage®



* Evaluate infants first in secondary triage using the entire JS algorithm